



Quilted front and back panels join a water-resistant soft shell to make the Hybrid a trend-right performance jacket with urban edge.

- 100% polyester knit shell bonded to a water-resistant film insert and a 100% polyester microfleece interior
- 100% nylon woven overlays with quilted 4-ounce, 100% poly fill insulation at center front and back panels
- Reverse coil zippers
- Zip-through cadet collar with chin guard
- Zippered right chest pocket
- Front zippered pockets
- Left chest Port Pocket™ for easy embroidery access
- Comfort fit binding at cuffs
- Open hem with adjustable locking drawcords

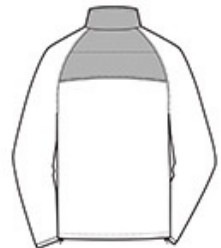
**

CARE INSTRUCTIONS

Machine wash cold with like colors. Do not bleach or use fabric softener. Tumble dry low. Remove promptly. Do not iron. Do not dry clean.

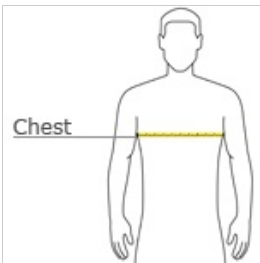


front



back

HOW TO MEASURE



CHEST

With arms down at sides, measure around the upper body, under arms and over the fullest part of the chest.

SIZE CHART

| | XS | S | M | L | XL | 2XL | 3XL | 4XL |
|-------|-------|-------|-------|-------|-------|-------|-------|-------|
| Chest | 32-34 | 35-37 | 38-40 | 41-43 | 44-46 | 47-49 | 50-53 | 54-57 |

COLOR INFORMATION



Deep Black
PMS NTR Black
C



Skydiver Blue/
Grey Steel
PMS 7462 C



Smoke Grey/
Grey Steel
PMS Cool Grey
11 C